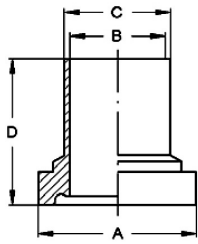
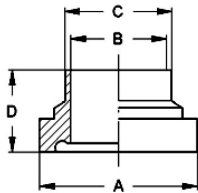
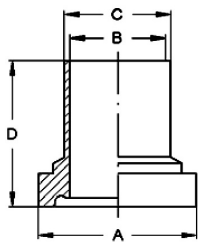


**Aseptic-/Hygienic-Screwed pipe connection DIN 11853-1 + DIN 11864-1**
**Art.No**
**EUR**
**Art.No**
**EUR**
**Liner DIN, DIN 11864-1**


DN	A	B	C	D		AISI316L-1.4404	AISI316L-1.4435		
10	21,9	10	13	39		478730	17,30	470630	Enquiry
15	27,9	16	19	39		478731	17,90	470631	Enquiry
20	35,9	20	23	38		478732	19,70	470632	Enquiry
25	42,9	26	29	40		478733	21,50	470633	Enquiry
32	48,9	32	35	47		478734	23,90	470634	Enquiry
40	54,9	38	41	47		478735	30,40	470635	Enquiry
50	66,9	50	53	48		478736	37,20	470636	Enquiry
65	84,9	66	70	61		478737	59,30	470637	Enquiry
80	98,9	81	85	61		478738	72,20	470638	Enquiry
100	118,9	100	104	66		478739	102,10	470639	Enquiry

**Liner DIN, DIN 11853-1**


DN	A	B	C	D			AISI316L-1.4404	
10	21,9	10	13	17			470530	13,80
15	27,9	16	19	17			470531	14,40
20	35,9	20	23	18			470532	15,20
25	42,9	26	29	22			470533	15,90
32	48,9	32	35	25			470534	17,20
40	54,9	38	41	26			470535	18,40
50	66,9	50	53	30			470536	22,90
65	84,9	66	70	34			470537	30,40
80	98,9	81	85	38			470538	41,70
100	118,9	100	104	46			470539	56,80

**Liner ASME, DIN 11864-1  
(AISI316L-1.4404)**


DN	A	B	C	D			AISI316L-1.4404	
1"	42,9	22,1	25,4	40			478903	23,80
1,5"	54,9	34,8	38,1	46,5			478904	30,40
2"	66,9	47,5	50,8	47,5			478905	39,50
2,5"	84,9	60,2	63,5	63			478906	63,20
3"	98,9	72,9	76,2	61			478907	75,50
4"	118,9	97,4	101,6	65			478908	103,60